



Knight Stars - Shine Bright

NOTTINGHAM ELEMENTARY

General PTA Meeting

September 17, 2014

PTA General Meeting Agenda

Wednesday, September 17, 2014 @ 6pm

- I. Call to Order and Establish Quorum
- II. Approval of August Meeting Minutes
- III. Principal's Report
- IV. Treasurer's Report
- V. Financial Reconciliation Report for 2013-2014
- VI. President's Report
- VII. SPARK Park Update
- VIII. Adjourn @ 6:30pm



PTA Bylaws

Changes to be incorporated into new Bylaws are highlighted below:

1. → Accepted new template provided by Texas PTA (our parent association)

2. → Changed local membership dues from \$2 to \$5.50

3. → Split Vice President of Fundraising into two officer positions

4. → Changed regular meeting months from Sept, Dec, Feb, Mar to Sept, Feb, and May; aligned month of meeting to Activity Updates in Sept and Feb and Election in May

5. → Reconciling voting requirements to reflect current operations



PTA Programs

We support our Teachers and Students!

Students

- Gardens Learning Centers
- Field Trips
- Library Books
- Leveled Readers
- Health Fitness
- Recycling
- Enrichment Programs
 - Reflections
 - Talent Show
 - Odyssey of the Mind
 - Think Stretch
 - Extreme Science
 - Science Lab

Teachers

- Professional Development
- Principal's Student Incentive Fund
- Monthly Appreciation Lunches
- Teacher Appreciation Week
- Grade Level Supplies
- Curriculum Needs
- Apples for Teachers
- Room Parents
- Copy Cats



NHE PTA Spending Snapshot

\$65,000 during 2013-2014 School Year

- **~\$13,000 (20%) was spent on curriculum needs including classroom support** including subscriptions to Scholastic News and Time for Kids, planners for 4th & 5th grade, leveled-reading books for the Literacy Library, and manipulatives and supplies for all grade level classrooms as well as health fitness equipment/needs;
- **~ \$10,000 (15.4%) was spent on enrichment programs** including Extreme Science, Math & Science Night, Think Stretch, Reflections, Musical programs, field trips, and cultural arts;
- **~ \$10,000 (15.4%) was spent on part-time helpers in the front office and library;**
- **~ \$8,000 (12%) was spent on hand-held radios** so that each teacher and staff member has a radio which is required for the safety procedures for the school
- **~ \$6,000 (9%) on staff development** such as substitutes for grade-level planning and consultants and conferences for staff and teachers as well as Principal Incentive Award and Fund;
- **~ \$5,000 (8%) was spent on technology purchases** including two new ACTIVBoards;
- **~ \$5,000 (8%) was spent on campus improvements** including updating the front office, teachers' lounge as well as maintaining the butterfly and vegetable gardens and developing the Science Lab;
- **~ \$4,000 (6%) was used for student services** including nurse's clinic, counselor programs and books for the library;
- **~ \$4,000 (6%) was used for PTA business expenses, hospitality, meals during Teacher Appreciation Week and other programs.**



PTA Fall Fundraisers

We need your support!

Major Fundraisers

- Fiesta Knight Dinner & Auction:
November 8th

NEED DONATIONS

NEED SPONSORS

Smaller Fundraisers

- Book Fair
- Birthday Marquee
- Spirit Sales
- 5th Grade Graduation/Party
- Spirit Night at local restaurants

Contribution Programs

- Randall's Good Neighbor
- Josephine's Day Spa
- Corporate Matching
- Volunteer Grants
- Target RED Card
- Dairy Ashford Roller Rink
Skate Day
- Box Tops



PTA Spring Fundraisers

Mark your calendar and find out how you can help!

4th Annual Knight Run: Feb. 20th

- A school wide event in which all students and staff participate.
- Participants will get pledges (from friends, family, or neighbors), run or walk laps during school, and collect money for their school PTA.
- GREAT PRIZES!



Spring Fling Carnival: May 15th

- A family fun event at NHE Fields from 3pm – 7pm
- Open to the community
- Games, inflatables, food, entertainment and much more


SPRING
FLING



2014-2015 PTA Budget – Approved 5/14

<u>Income Category</u>	<u>Total</u>
Charitable Contributions	\$13,000
Primary Fundraisers	\$52,000
Auction	\$30,000
Carnival	\$11,000
Knight Run	\$11,000
Small Fundraisers	\$9,000
Total Income:	\$74,000

<u>Expense Category</u>	<u>Total</u>
Campus Improvement	\$5,400
Curriculum Needs	\$16,100
Enrichment Programs	\$9,200
Hospitality	\$2,700
PTA Administration	\$2,900
School Administration	\$37,700
Total Expenses:	\$74,000

Restrict Funds Approved in May 2014:

- SPARK Park \$40,000
- Start of School Year Working Capital \$8,000
- Food Play \$1,500
- COP Grant \$2,500



Budget Amendment Proposal

<u>Income Category</u>	<u>Total</u>
Charitable Contributions	\$13,000
Primary Fundraisers	\$52,000
Auction	\$30,000
Carnival	\$11,000
Knight Run	\$11,000
Small Fundraisers	\$9,000
Total Income:	\$74,000

<u>Expense Category</u>	<u>Total</u>
Campus Improvement	\$5,400
Curriculum Needs	\$16,100
Enrichment Programs	\$9,200
Hospitality	\$2,700
PTA Administration	\$2,900
School Administration	\$25,700
Total Expenses:	\$62,000

\$12,000 reduction
due to additional
funding received
from SBISD
↓

Restrict Funds Approved in May 2014:

- SPARK Park \$40,000
- Food Play for H&F Program \$1,500
- COP Grant for Math Tutors \$2,500



PTA Membership

Your membership and support help fund programs at our school!

2013-2014 PTA Numbers	
Families/Community Members	150
Staff Members	51
Total	201

Current on 9/15/14	
Families/Community Members	120
Staff Members	20
Total	140

Why join the PTA? What's In It For Me?

Bottom line: Bolster student success through family involvement

The PTA promotes family involvement.

Be Connected. Be Involved. Be Active.

Don't miss out on receiving current PTA member benefits including:

- Our Children digital magazine;
- Two PTA advocacy e-newsletters: PTA Takes Action and PTA Parent;
- Access to exclusive member content on the PTA.org website;
- Online e-learning or workshop training at state and national PTA conferences
- Discounts on national sponsor products

Stay connected on the local, state, and national levels of PTA by renewing your membership !



School Communication

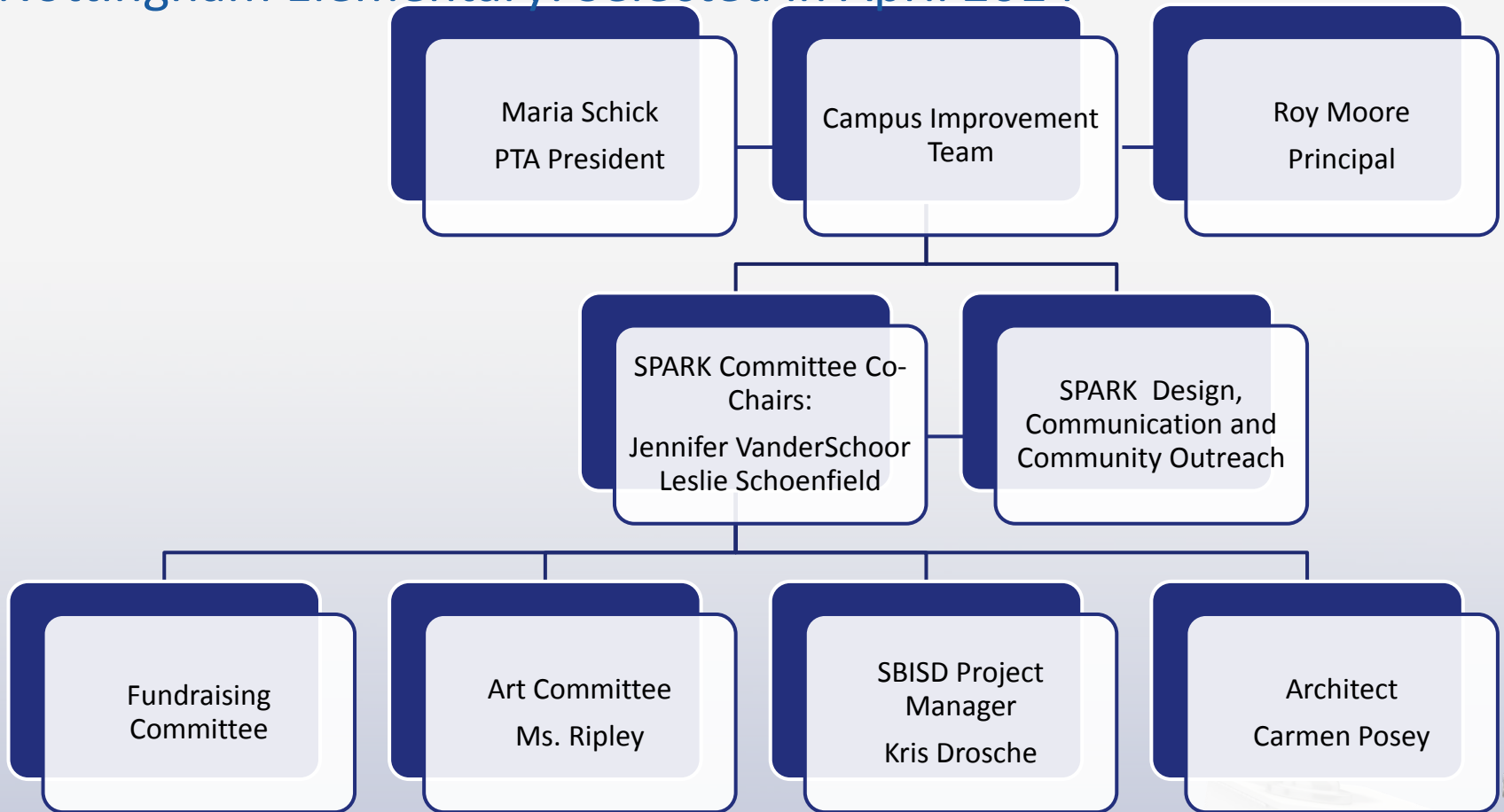
Be Informed.

- Check your child's folder everyday
 - Tuesday folder contains most of PTA communication
- Knightly News and PTA News eblasts on Wednesday
- Facebook – *like* Nottingham Elementary PTA
- Websites:
 - www.nottinghampta.com
 - <http://nhe.springbranchisd.com>
- Room Parents – Be sure to leave contact info on your teacher's signup sheet so the Room Parent can contact you
- Family Access – see Amy Reoh for log in access
 - Stay up to date on grades, homework, attendance



SPARK Park Committee

Nottingham Elementary: Selected in April 2014



Nottingham Knight SPARK Park

Our Knight themed park will include:



- Brand new track with fitness stations
- Leveled field area with improved drainage
- Multi-use children's sports area
- Drawbridge entrance with giant outdoor chess game

- Beautiful landscaping, trees and sod in the front and back of the school
- Handicap accessibility for our existing playground
- Revitalization of our Pre-K play area
- New castle play structure

To turn our vision into a reality we will need fundraising assistance from generous families, area businesses as well as corporations!!!

Fundraising should be complete by end of the school year so that construction can occur over the summer months



*Some people want it
to happen,
some wish it to happen,
others make it happen!*

– Michael Jordan

Schedule for the Evening:

6:30-7:00 PK, KG, 1st, and 2nd - Open House

3rd, 4th and 5th - Curriculum Night

7:00-7:30 PK, KG, 1st, and 2nd - Curriculum Night

3rd, 4th, and 5th - Open House

8:00pm Book Fair will close for the night

Open House Location: In the classroom

Curriculum Night Locations:

KG and 5th - Room 206

1st and 3rd - Science Lab Room 208

2nd and 4th - Gym



Next PTA Meeting 10/10 8:15 am

Adjourn PTA Meeting at 6:30pm